

図7.1a 長辺5.2mm

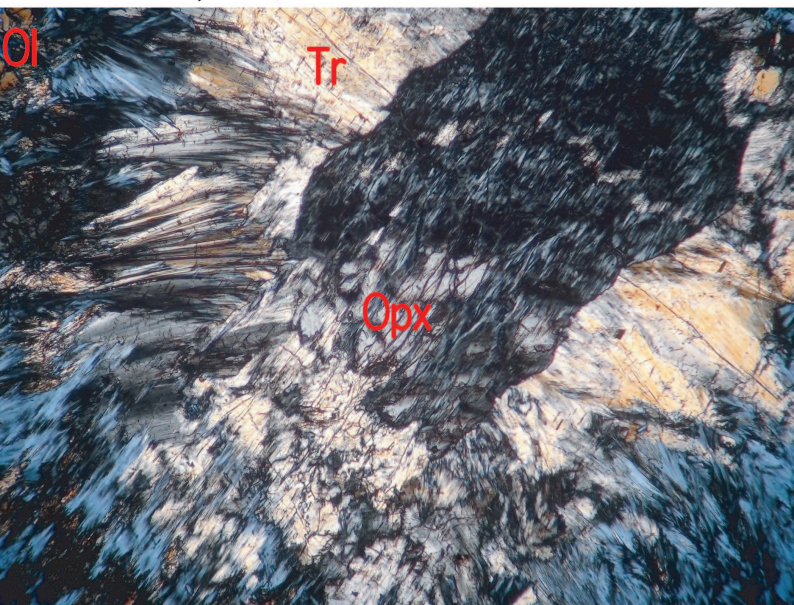
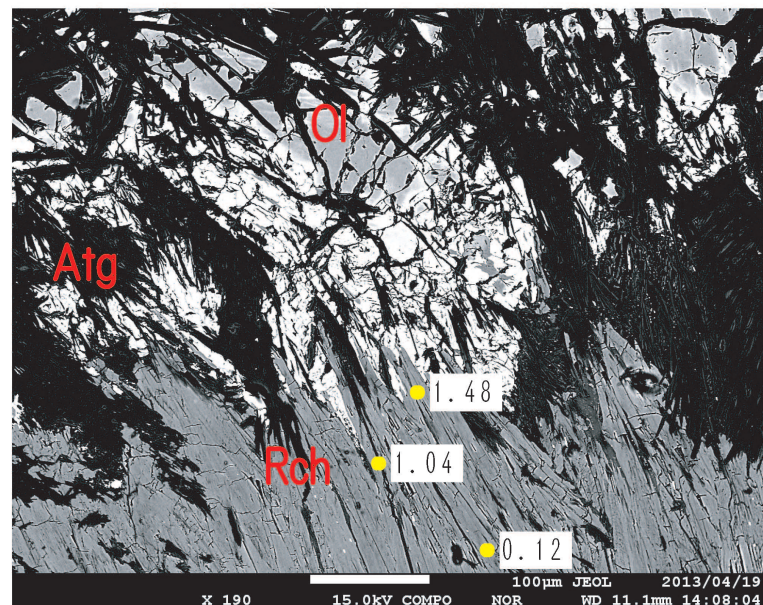


図7.1b



Opxの外縁から成長した角閃石(Tr,Rch)
数字は黄色のポイントでのNa量を示す

図7.2a 粗粒なかんらん石

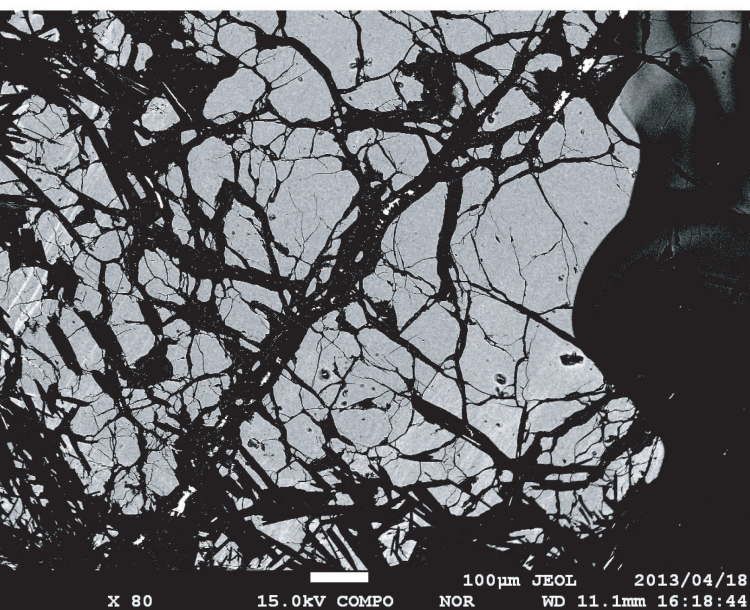


図7.2b 細粒なかんらん石

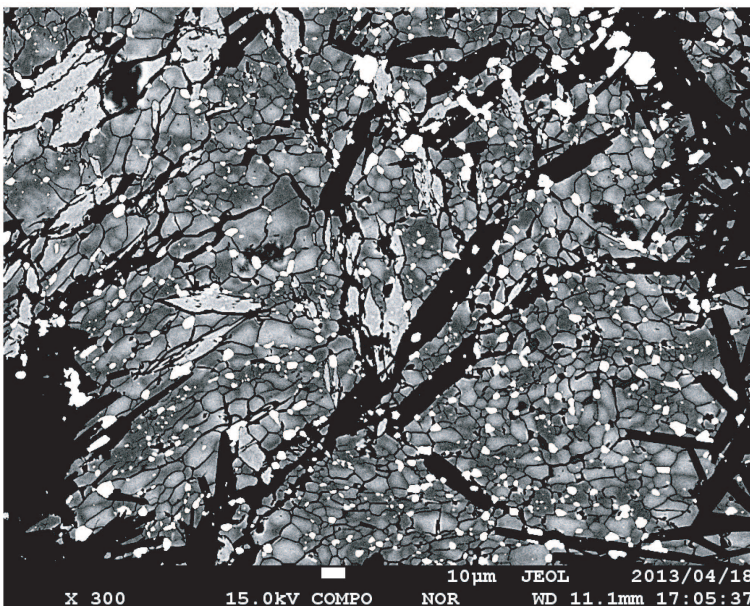
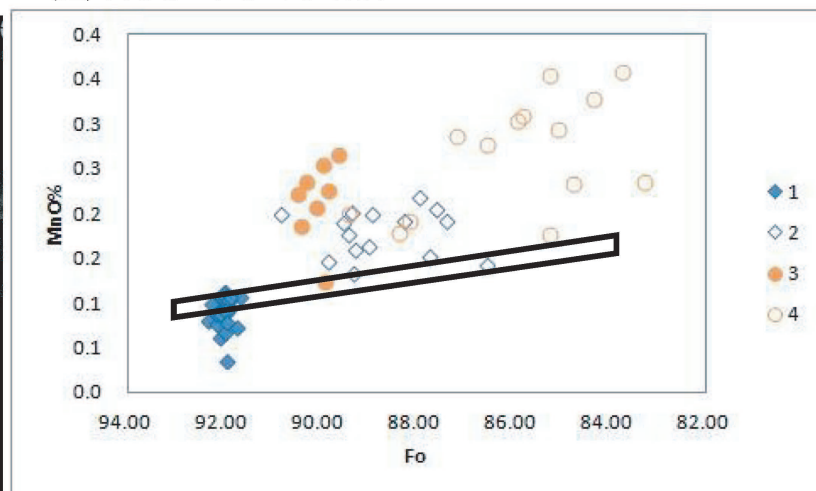


図7.3a Fo vs Mn



- 1 粗粒なかんらん石で暗色部
- 2 粗粒なかんらん石で明色部
- 3 細粒なかんらん石で暗色部
- 4 細粒なかんらん石で明色部

図7.3b Fo vs Ni

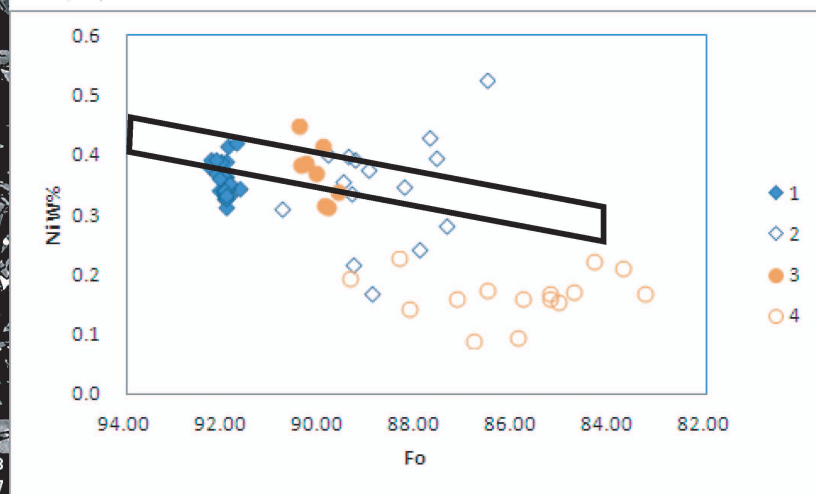


図8.1

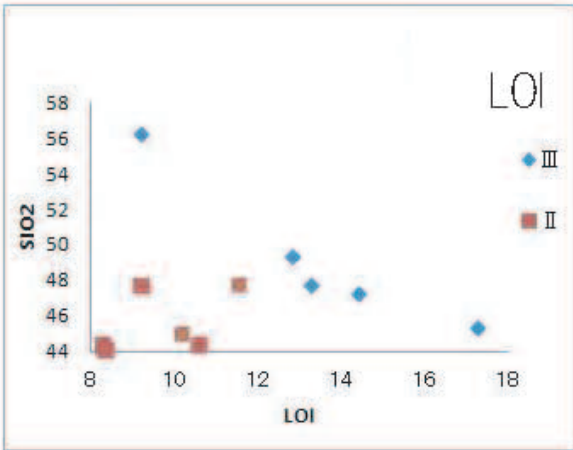


図9.1 I 帯の岩石

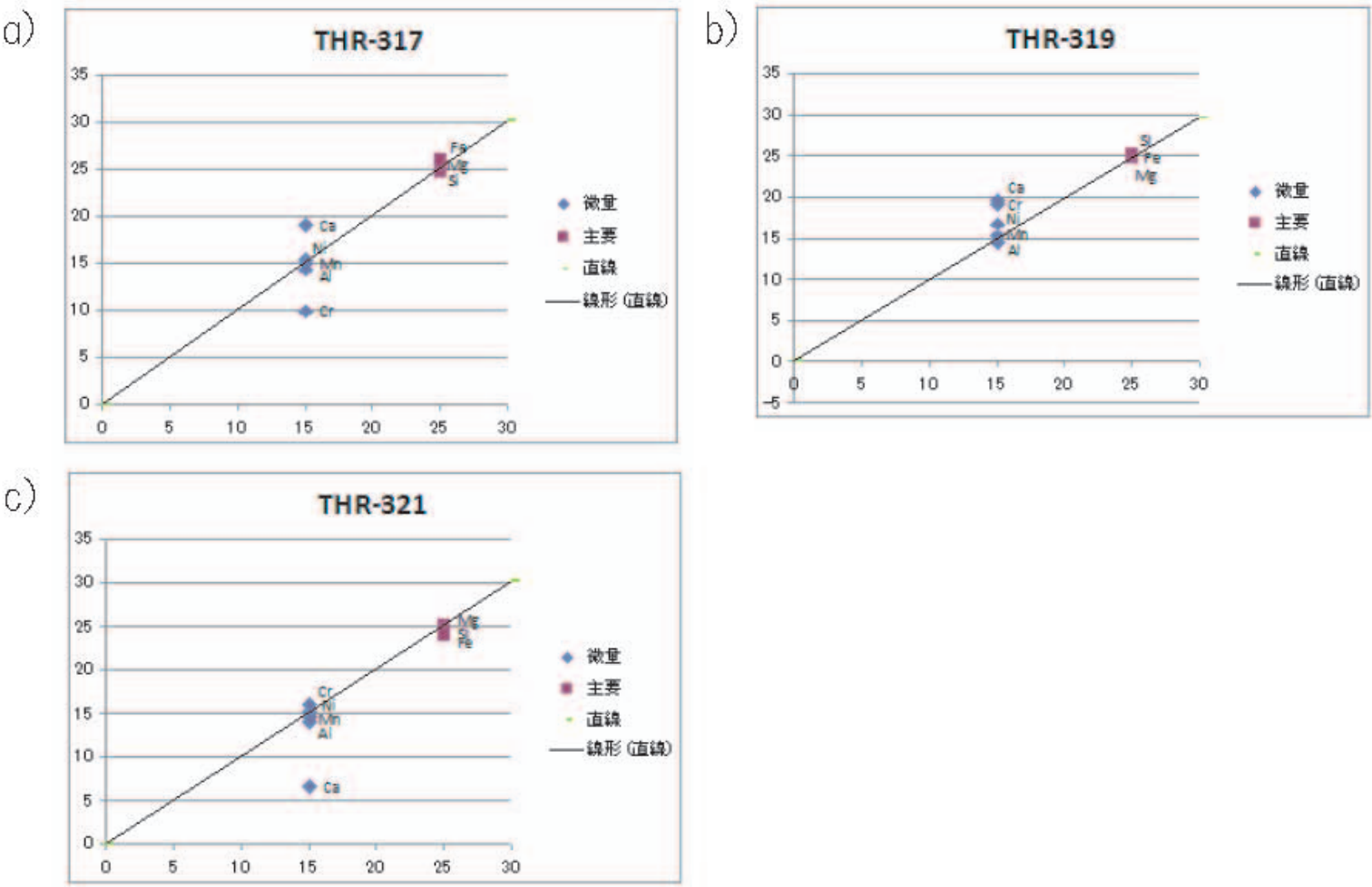


図9.2 II 帯の岩石の中でアンチゴライトがみられない岩石

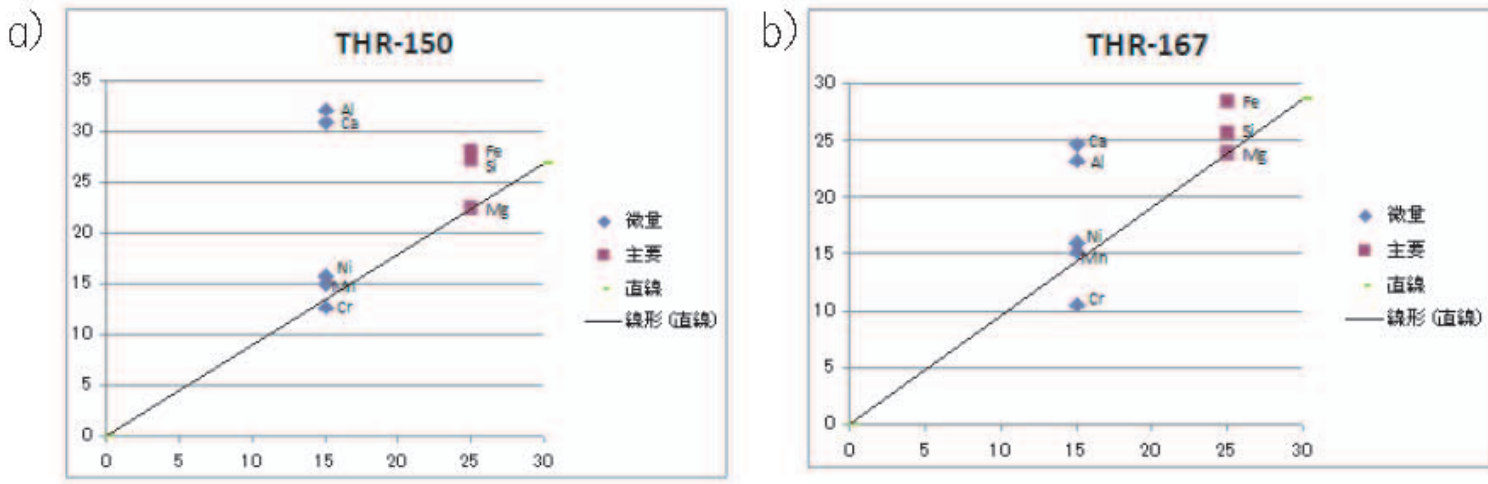
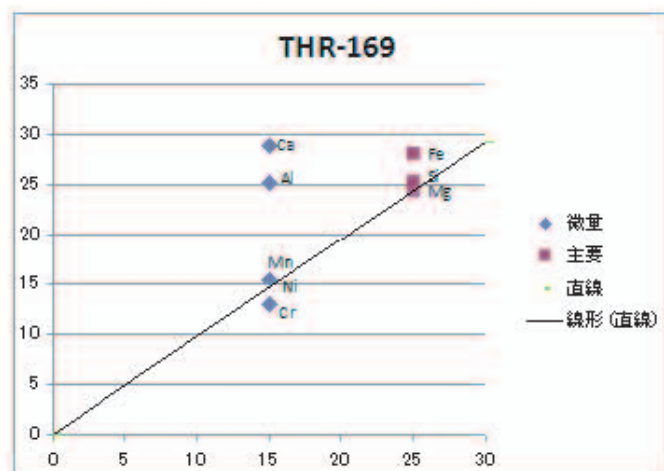
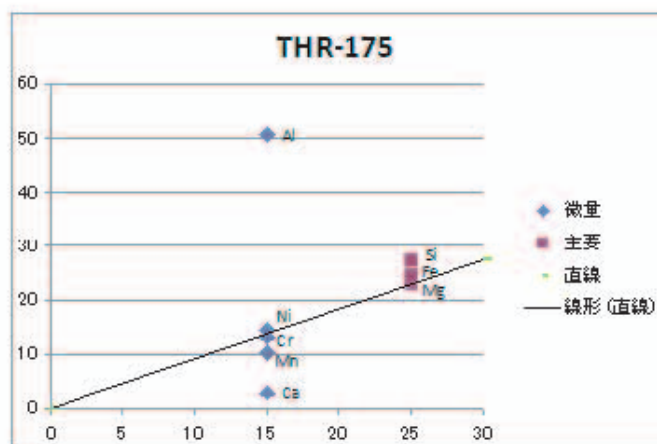


図9.3 II 帯の岩石

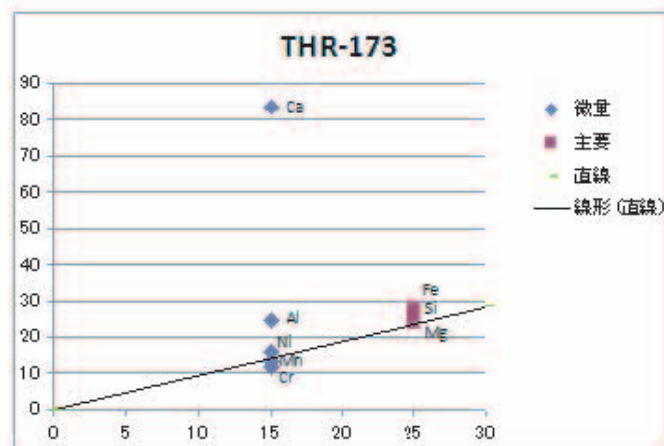
a)



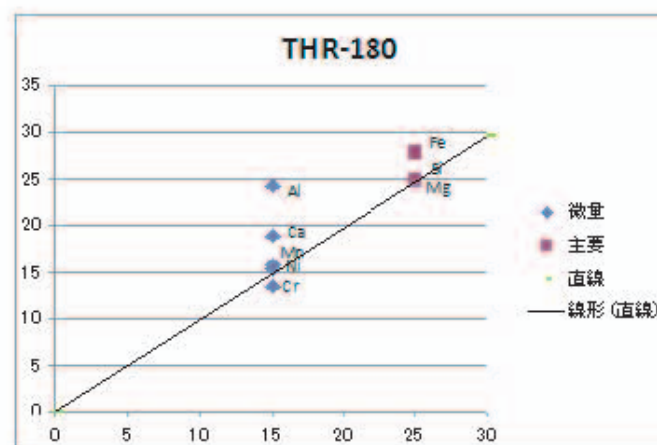
b)



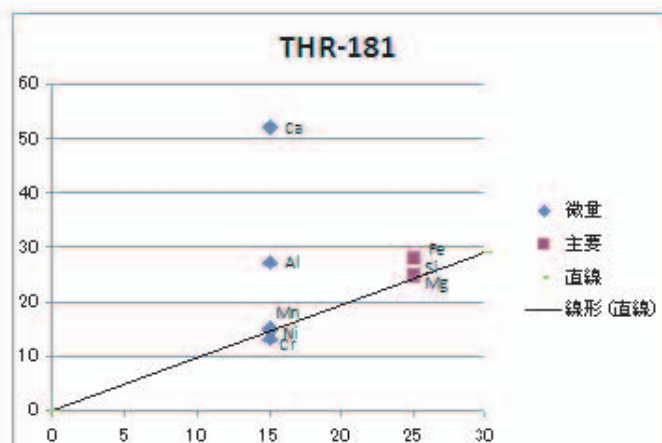
c)



d)



e)



d)

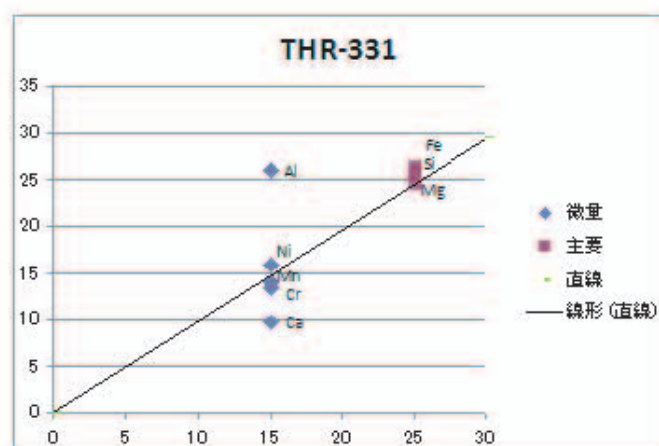
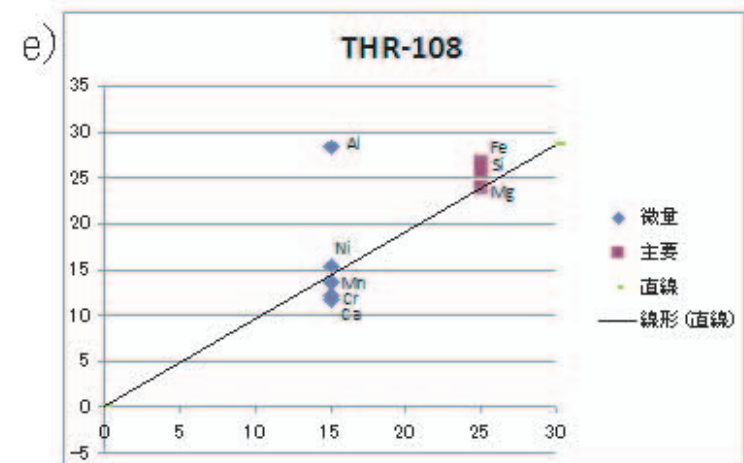
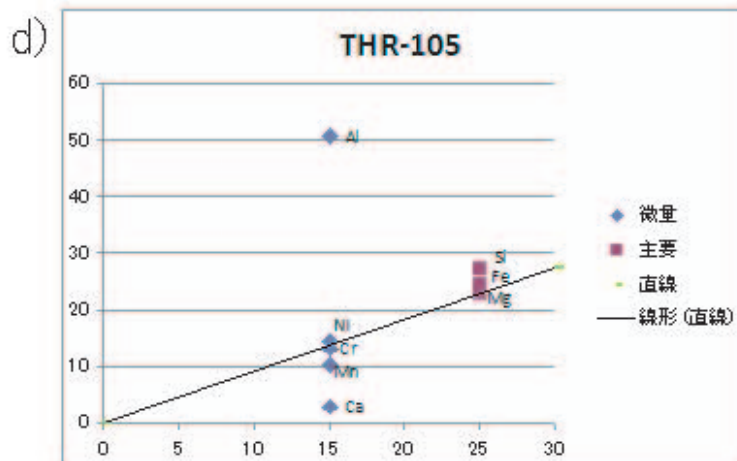
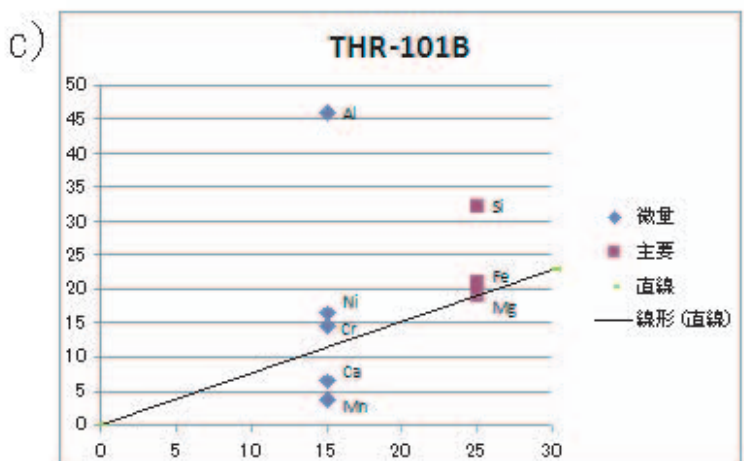
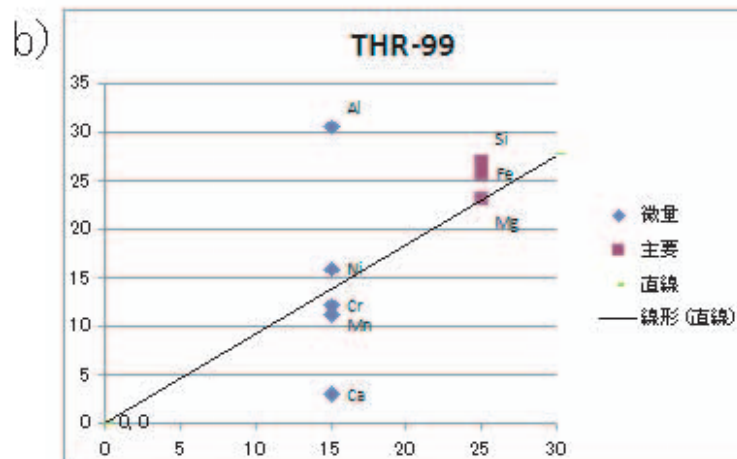
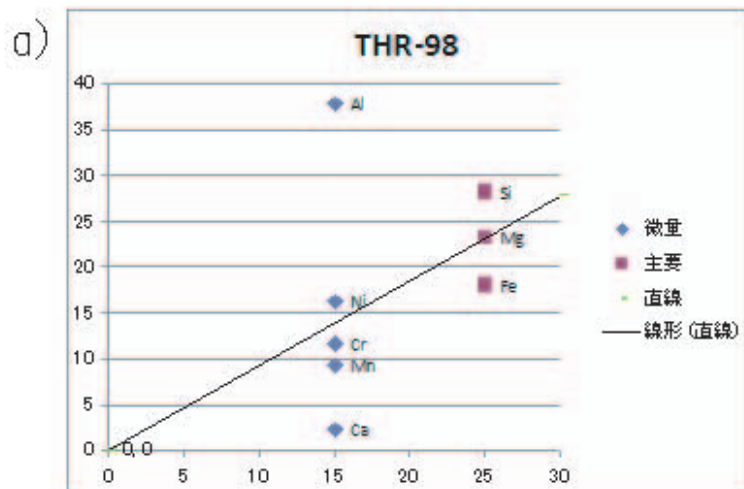
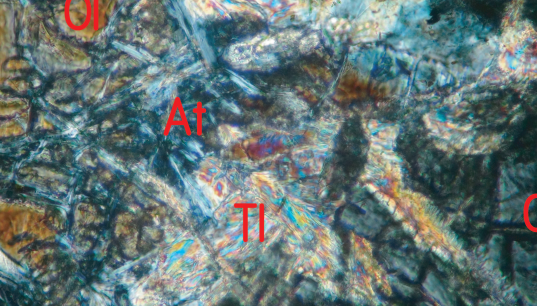


図9.4 Ⅱ 帯の岩石





Micrograph showing a complex texture of mineral grains, likely representing a metamorphic rock. The image displays a dense arrangement of blue and brown mineral grains, with some areas showing more crystalline structures. Red labels 'Di' and 'Tr' are overlaid on the image, indicating specific mineral phases or features.

図11

