

Fig 2 ↑

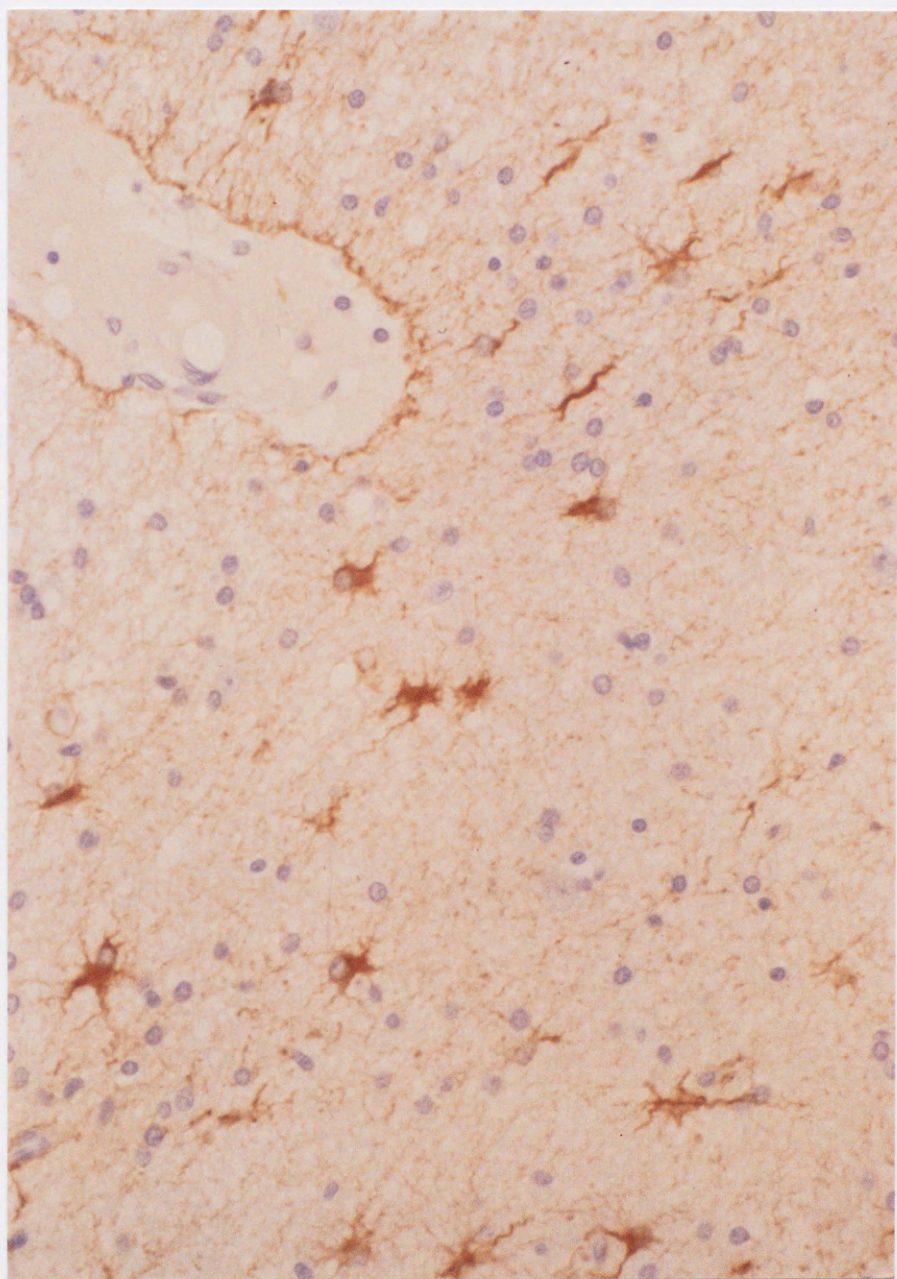
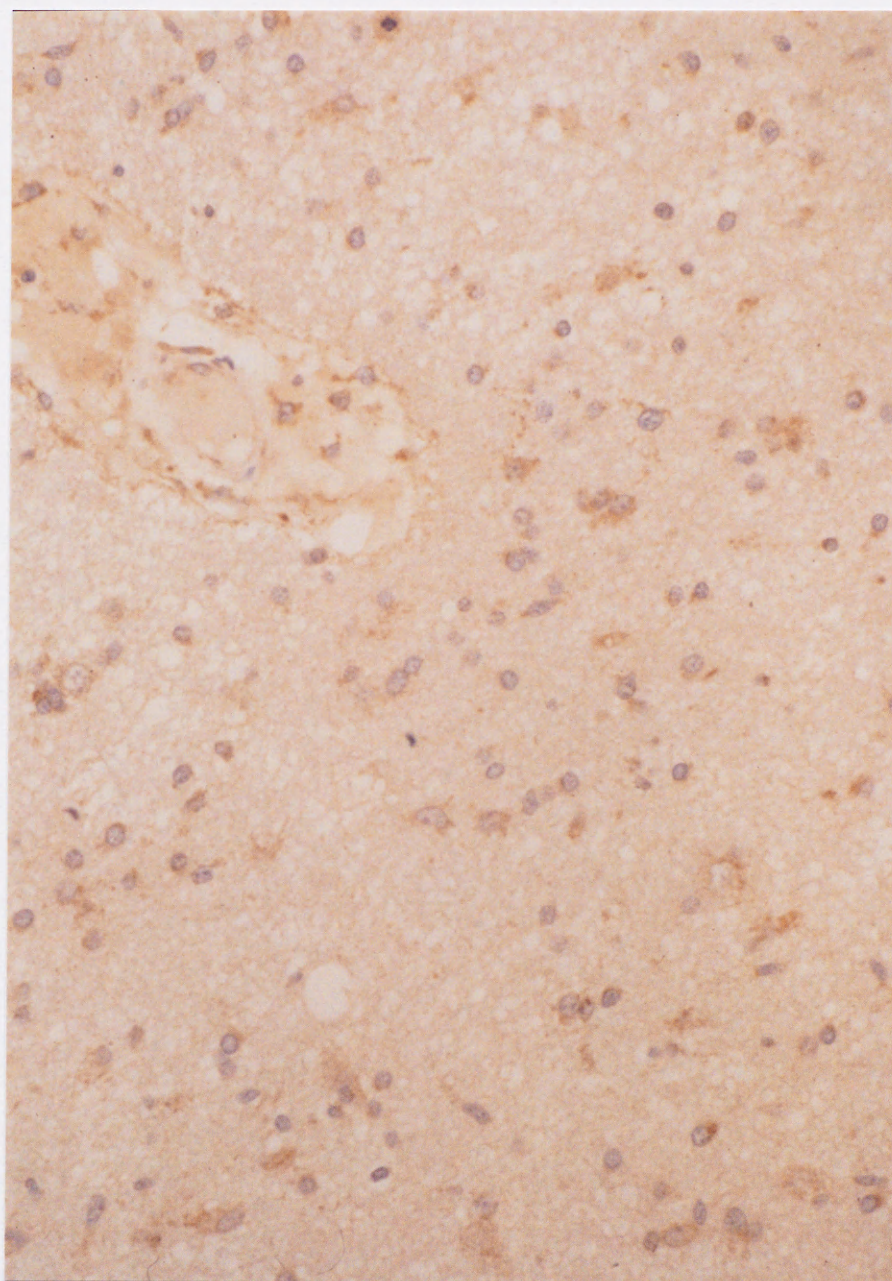
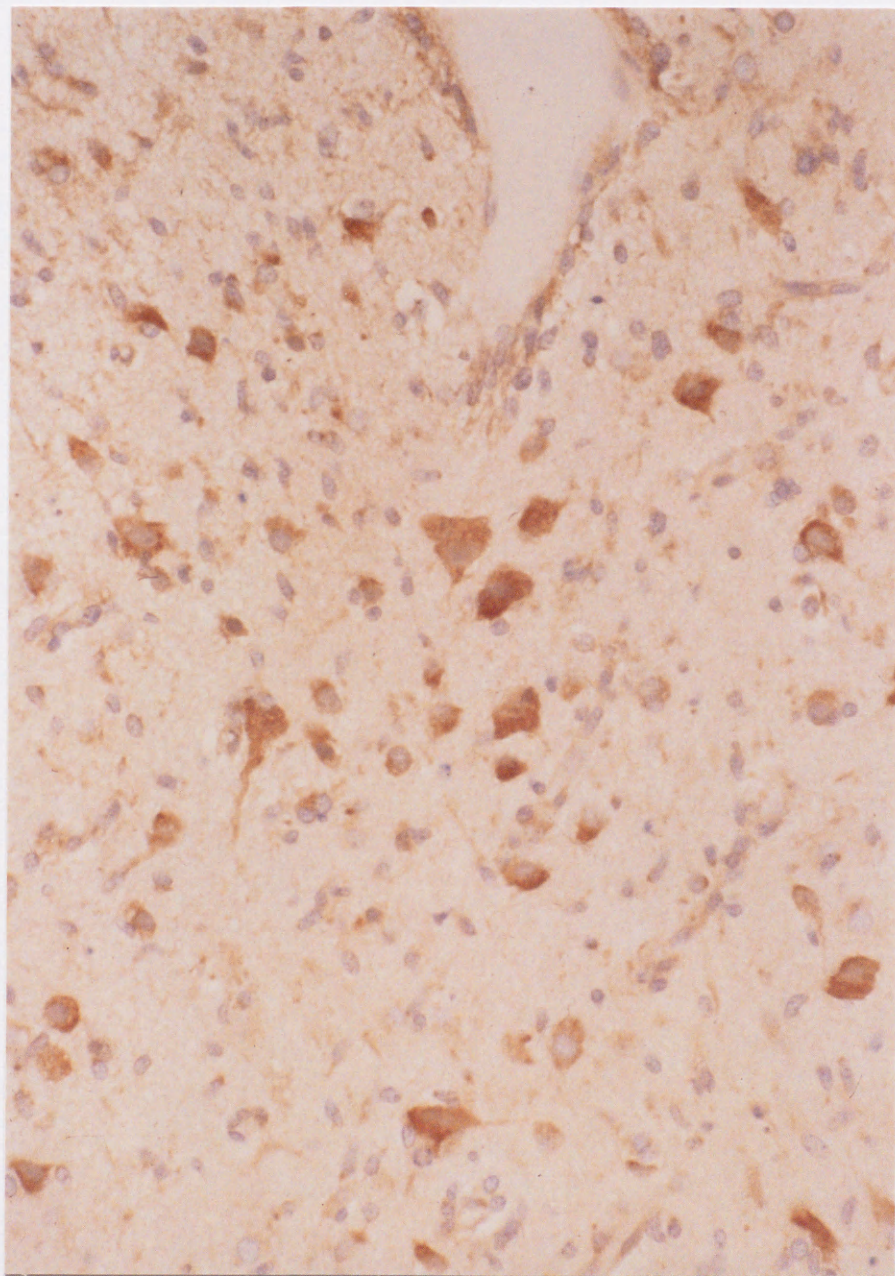


Fig 3. a ↑





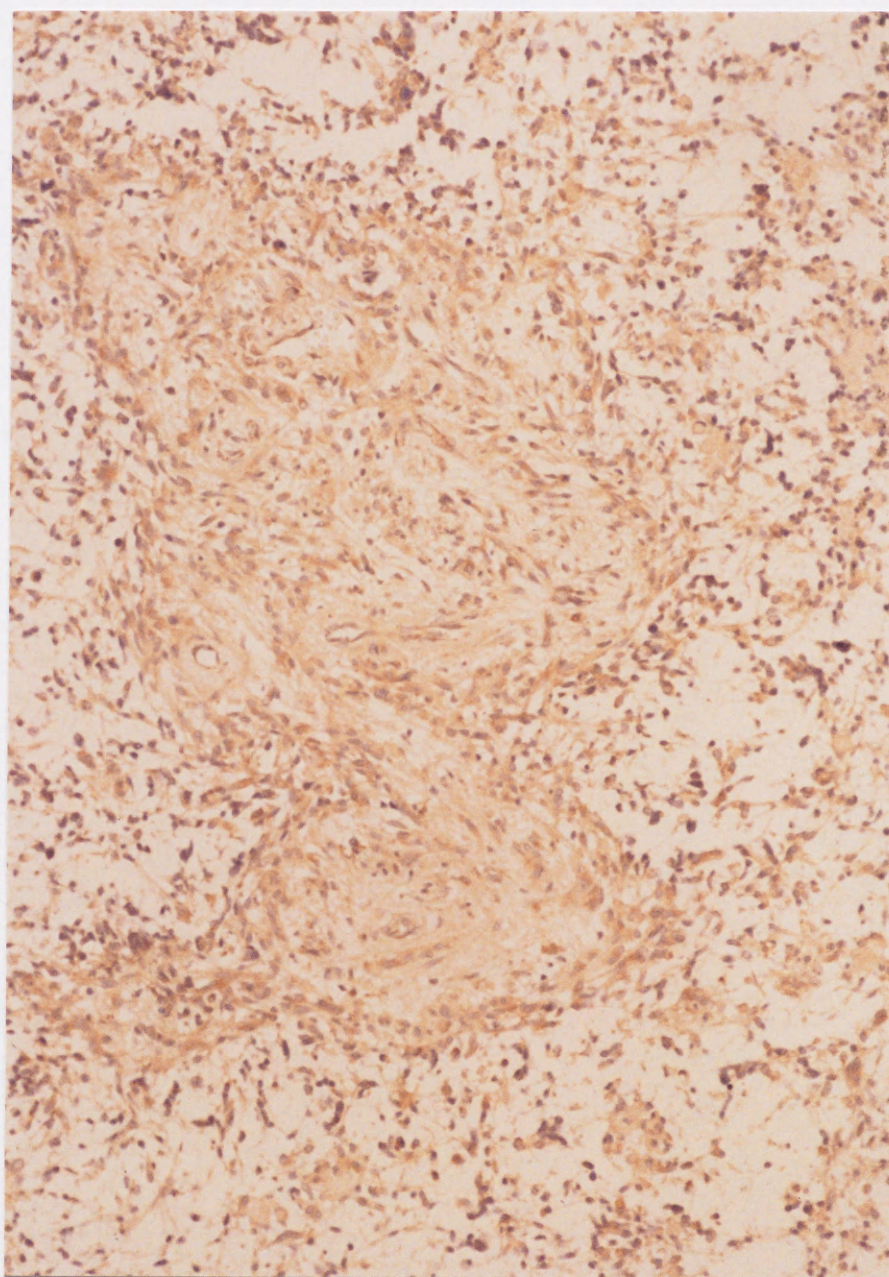


Fig 8 b ↑

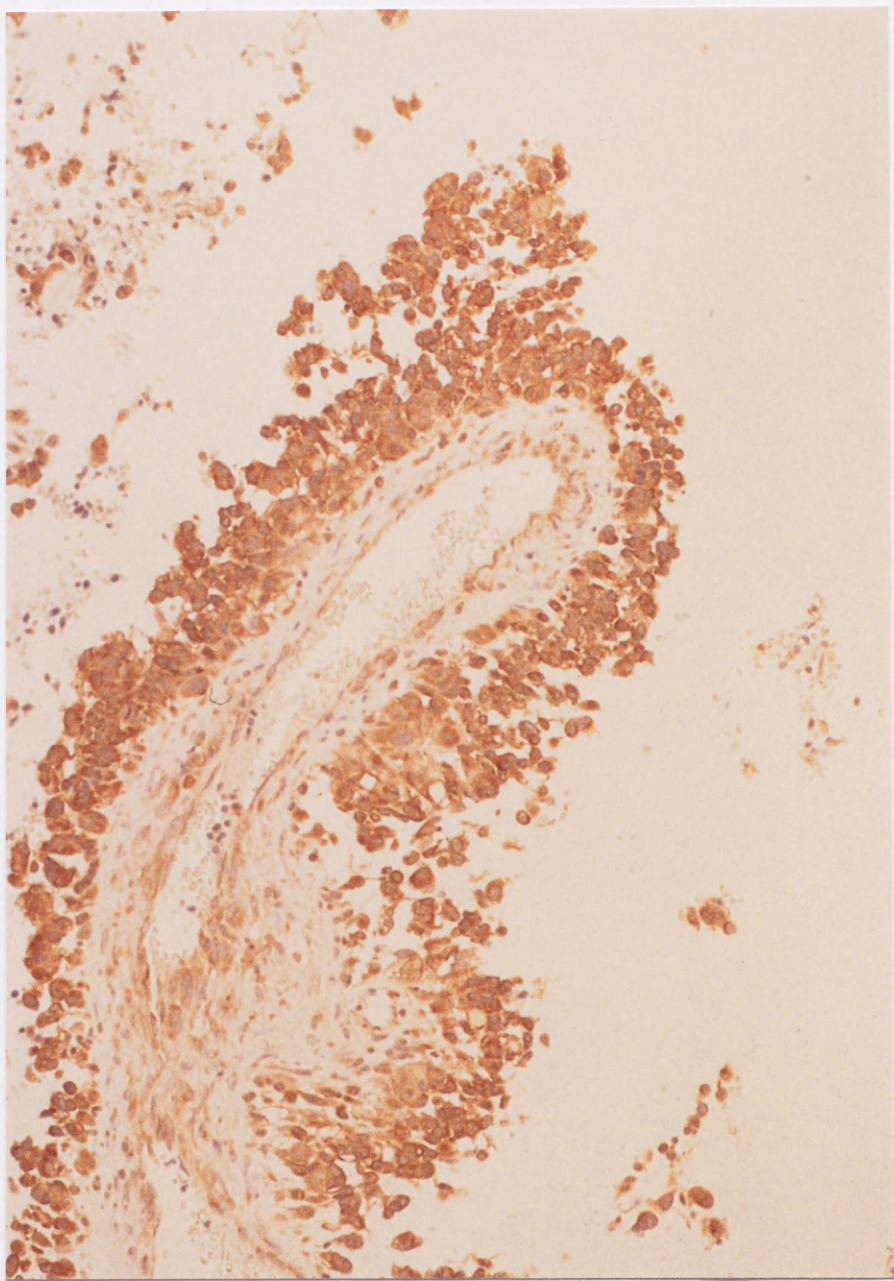
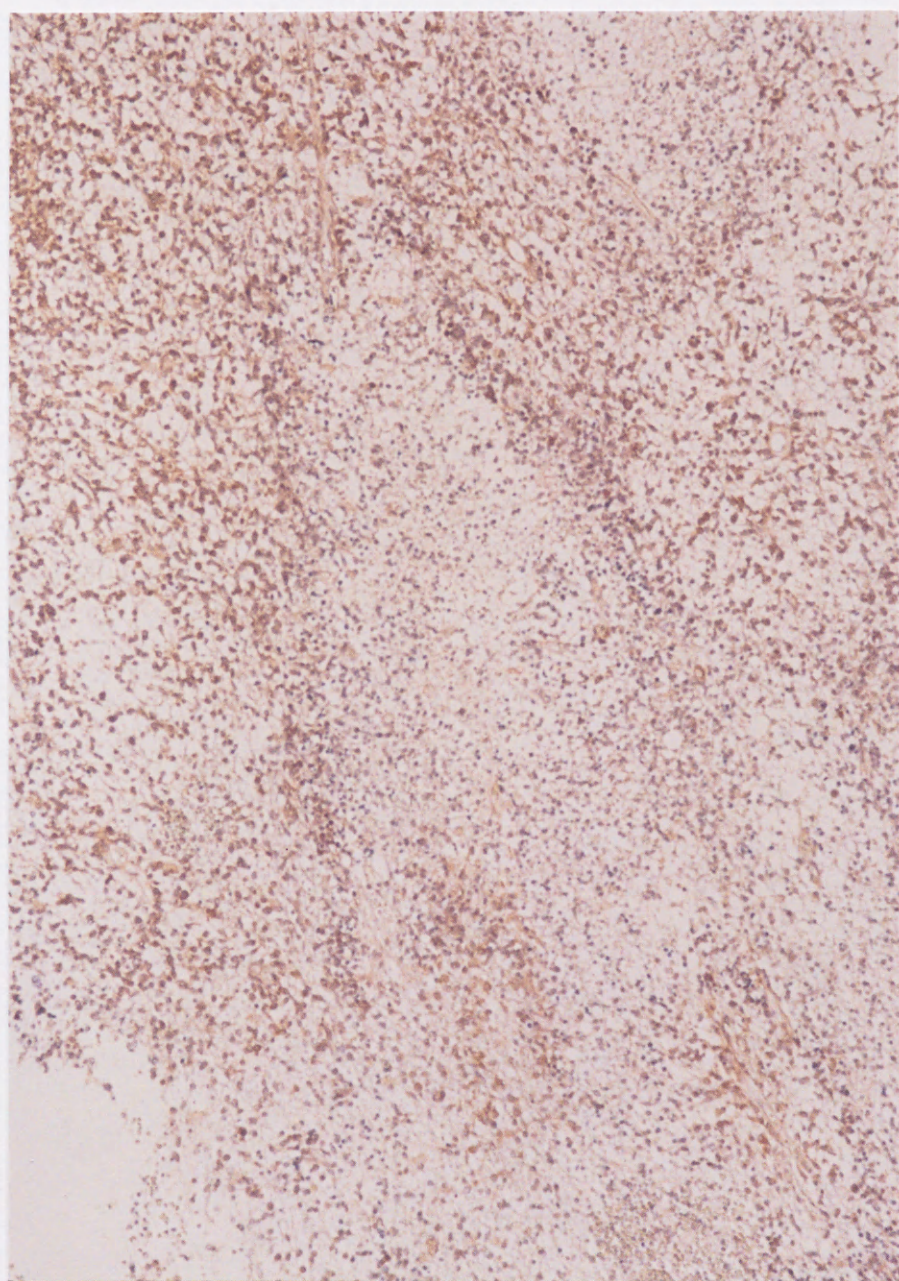


Fig. C. ↑



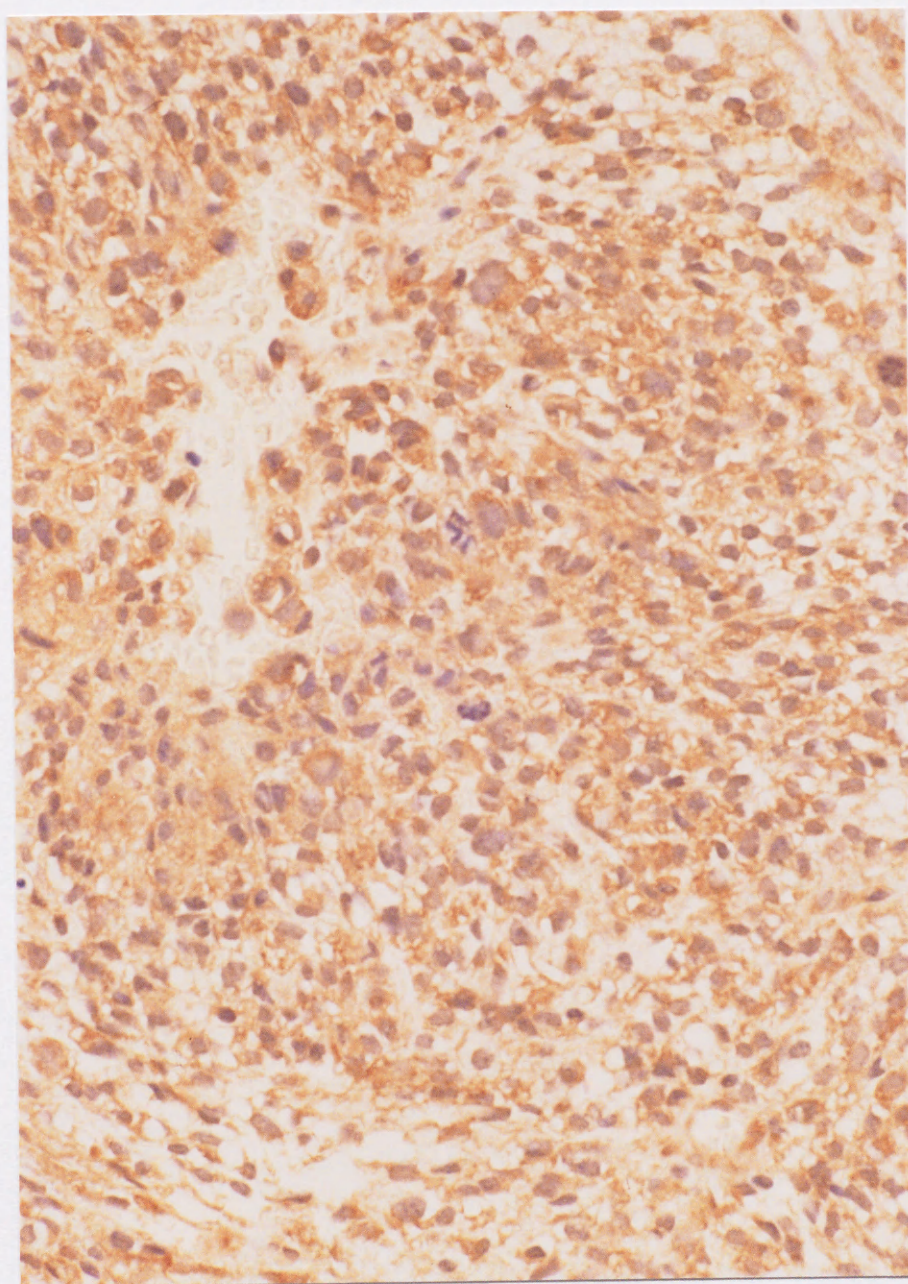


Fig 5 a ↑

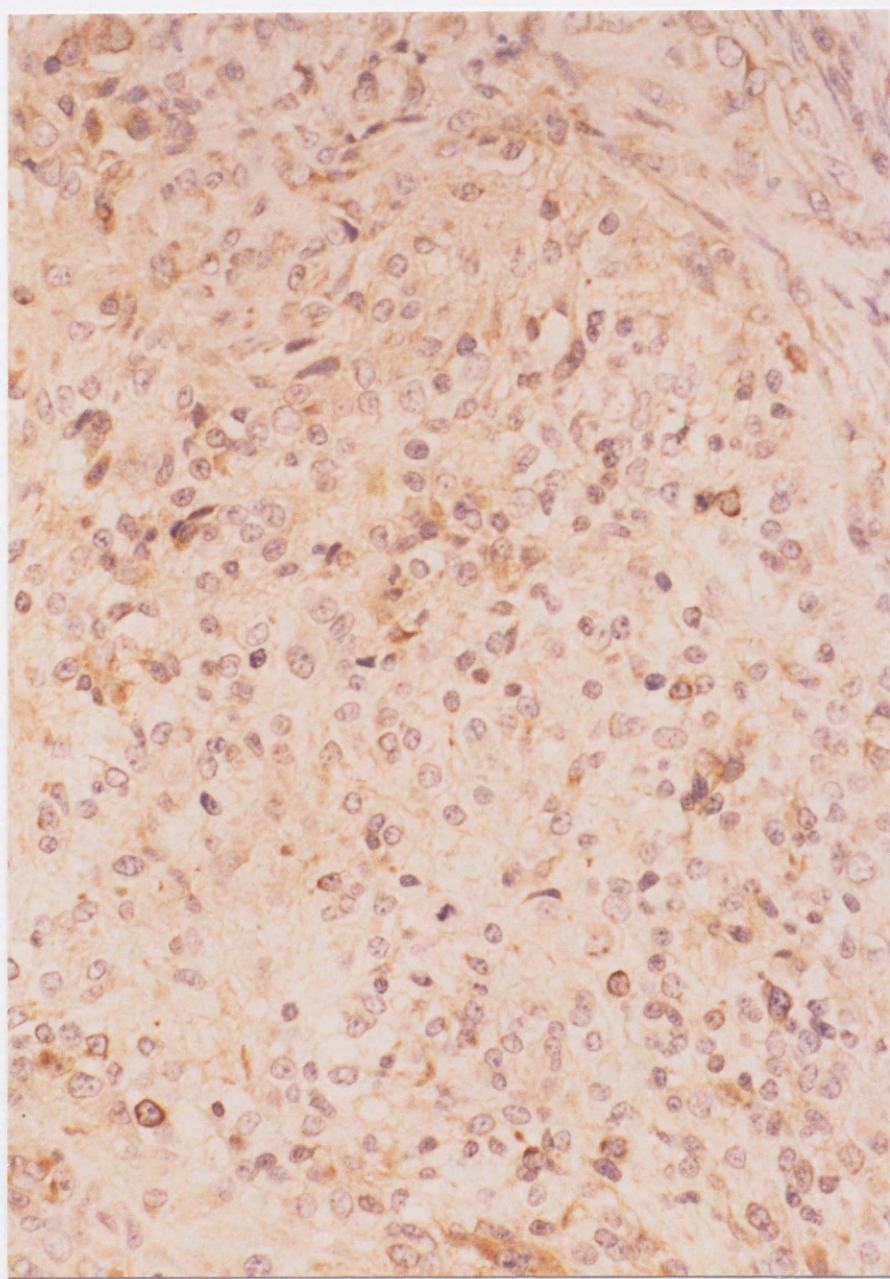


Fig 5 b ↑

Table. 1 Summary of glioblastoma cases.

Case	Age	Sex	Ope time	N-cadherin positive rates	Enhancement**	Ventricle ***	Dissemination	Meta ****	Time for dissemination	Follow-up time
1	46	M	1	+++	-	-	-	-	14	17
			2	-	+	-	post ope	-		
2	71	M	1	+++	+	+	-	-	12	15
			2	++	+	+	post ope	-		
3	27	F	1	+++	-	-	-	-	7	50
			2	++	-	-	-	*		
			3	+	+	-	-	*		
4	57	F	1	+++	+	-	-	-	29	34
			2	++	+	-	post ope	-		
			3	++	+	+	pre ope	-		
5	57	M	1	++	-	-	-	-	23	27
			2	+	+	+	-	dura		
6	43	F	1	+++	+	-	-	-	11	15
			2	+++	+	-	post ope	-		
			3	++	+	+	pre ope	-		
7	58	M	1	++	-	-	-	-	5	29
			2	+	+	-	pre ope	skin		
8	47	F	1	+++	+	-	-	-	18	32
			2	++	+	-	post ope	-		
9	50	M	1	+++	-	-	-	-	12	18
			2	++	+	-	post ope	-		
10	51	M	1	++	-	-	-	-		20
			2	-	-	-	-	-		
11	45	M	1	++	+	-	-	*		18
			2	+	+	+	-	*		
12	55	M	1	+	-	-	-	-		27
			2	+++	-	-	-	-		
			3	+	+	-	-	-		
			4	+	+	-	-	-		
13	57	M	1	++	-	-	-	-		19
			2	++	+	-	-	-		

The N-cadherin positive rates of small cells are +++ (strongly positive) when 90% or more of the cells were positive, ++when 50 to 90% were positive, +when 10 to 50% were positive, and - when less than 10% were positive.

* : Contralateral cerebral metastasis

*** : Ventricle was opened during operation.

** : Paraventricular enhancement.

****: Metastasis

Table . 2 Summary of anaplastic astrocytoma cases.

Case	Age Sex	Ope time	N-cadherin positive rates	Enhancement*	Ventricle**	Dissemination	Meta***	Time for dissemination	Follow-up time
14	43 M	1	+++	+	-	-	-	9	37
		2	++	+	-	post ope	-		
15	31 M	1	+++	+	-	-	-		14 A
		2	+	+	+	-	-		
16	64 M	1	++	+	-	-	-		32
		2	-	+	+	-	-		
17	43 M	1	+++	-	-	-	-		17 A
		2	+++	+	-	-	-		
18	33 F	1	+++	-	-	-	-		37
		2	+++	+	+	-	-		
19	49 M	1	+	-	-	-	-		8
		2	+++	-	-	-	-		
20	36 F	1	+++	+	-	-	-		41
		2	+	+	-	-	-		
		3	++	+	-	-	-		
21	53 F	1	++	-	-	-	-		32
		2	++	+	-	-	-		
		3	+++	+	+	-	-		
22	42 M	1	+	-	-	-	-		24
		2	+	+	-	-	-		

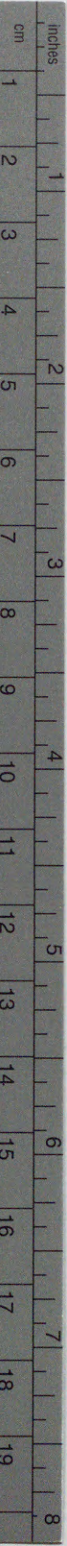
The N-cadherin positive rates are +++ (strongly positive) when 90% or more of the cells were positive, ++ when 50 to 90% were positive, +when 10 to 50% were positive, and - when less than 10% were positive.

* : Paraventricular enhancement.

** : Ventricle opened in the operation.

*** : Contralateral cerebral metastasis

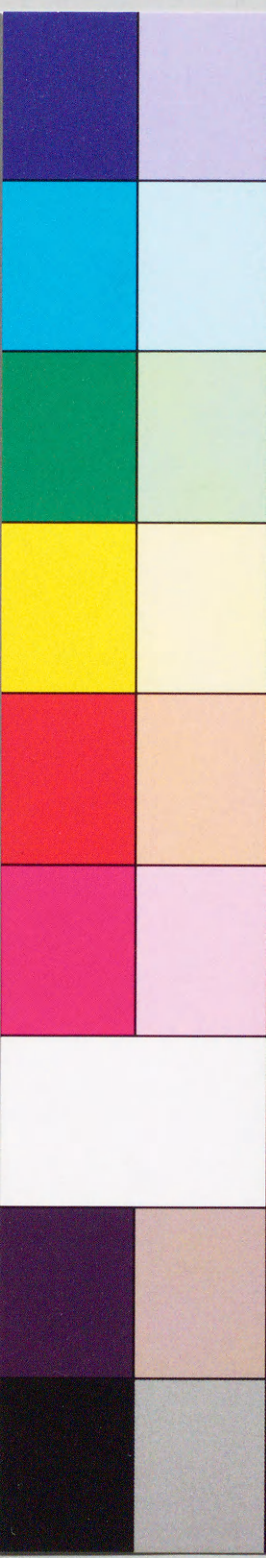
A: Alive



Kodak Color Control Patches

© Kodak, 2007 TM: Kodak

Blue Cyan Green Yellow Red Magenta White 3/Color Black



Kodak Gray Scale



© Kodak, 2007 TM: Kodak

A 1 2 3 4 5 6 M 8 9 10 11 12 13 14 15 B 17 18 19

